



Indoor Bar & Lounge

Celsius' glowing first-floor space serves as a warm escape for wintertime revelers, and is ideal for intimate cocktail receptions and spontaneous after-work gatherings alike. Embellished with a 34-foot-long bar, ambient LED lighting, custom-designed modular lounge seating, a private entrance for special events, and private restrooms, the lounge is thoroughly modifiable to any event's needs.

Capacity: 150 Size: 1,500 sq. ft.

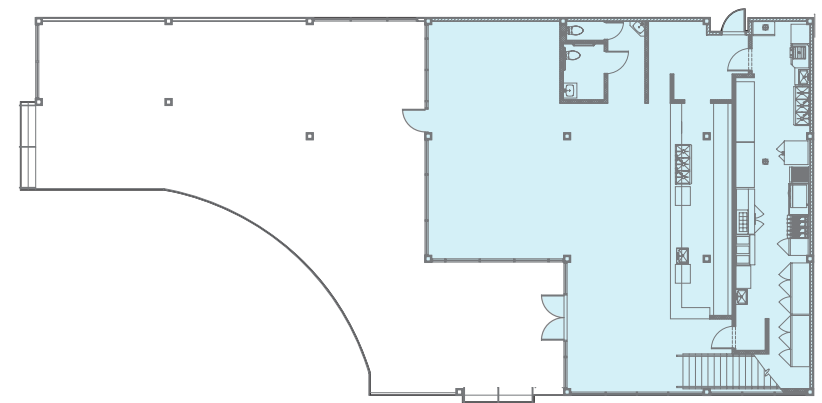
Amenities

Independent Audio System

34 ft Full-Service Bar

Modular Lounge & Bar Furniture

LED Thematic Lighting



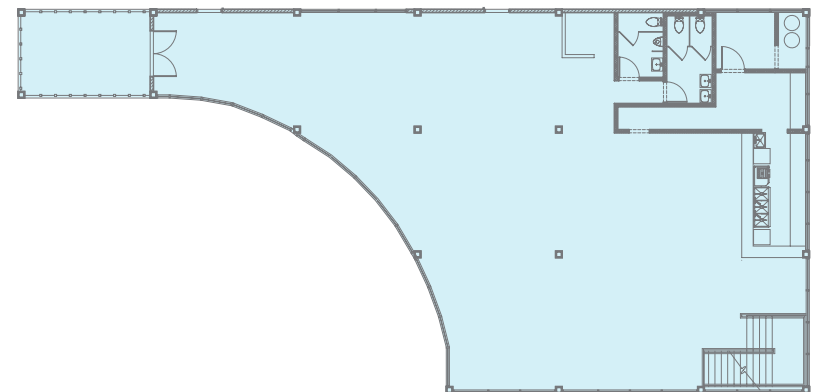
*activated area highlighted in blue



Atrium

Wrapped in a custom-fabricated transparent roof and glass facade, the Second Floor at Celsius makes for one of the most scenic dining rooms in New York City, with expansive Park, rink, and city views and a decidedly elevated sensibility. The space's large and modular footprint features a 24-foot bar, DJ booth, private restrooms, and private outdoor terrace overlooking the ice skating rink. Each detail is ultra-customizable for perfectly tailored events ranging from daytime luncheon meetings to sophisticated wedding receptions to full-scale corporate holiday affairs.

Capacity: 250 Size: 3,000 sq. ft.



Amenities

State-of-the-Art DJ Booth
70" HD Projector
Panoramic Views of the Park

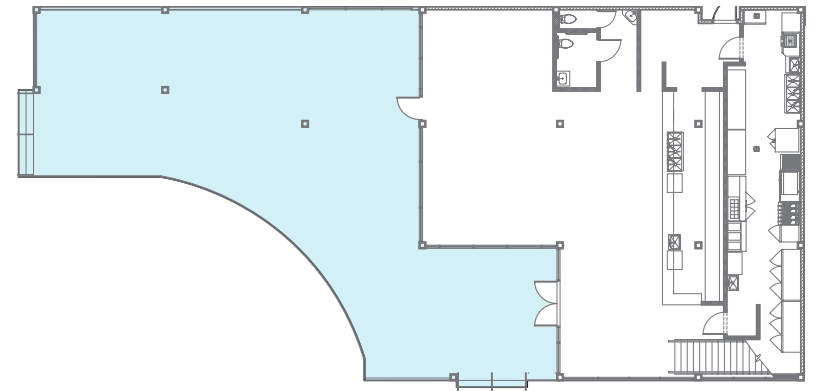
Modular Lounge & Bar Furniture
LED Thematic Lighting
Private Outdoor Terrace



Heated Outdoor Lounge & Deck

Equal parts cozy and crisp, Celsius' one-of-a-kind outdoor lounge is comfortable even on Manhattan's chilliest winter days and nights. With luxury banquettes and rink-side table service, the deck boasts heating elements throughout for a toasty, inviting al fresco experience and unparalleled views of Bryant Park's charming winter wonderland.

Capacity: 200 Size: 2,000 sq. ft.



*activated area highlighted in blue

Amenities

Custom Branding Capabilities
Modular Lounge & Dining Furniture Private
Entrance

Heated Lounge
Rink Side Views